



GLIMPSES OF THE SELF

The Essence of Being Seen



STEP INTO A WORLD WHERE EVERY GAZE HOLDS A STORY, AND EVERY ENCOUNTER IS A REFLECTION OF OUR INNERMOST SELVES. "GLIMPSES OF THE SELF: THE ESSENCE OF BEING SEEN" IS AN EVOCATIVE NEW EXHIBIT EXPLORING THE PROFOUND HUMAN EXPERIENCE OF BEING OBSERVED, ACKNOWLEDGED, AND UNDERSTOOD.

AS YOU WANDER THROUGH THE GALLERY, EACH PIECE INVITES YOU TO DELVE INTO THE INTRICATE EMOTIONS SPARKED BY THE SIMPLE ACT OF BEING SEEN. THE ARTWORKS, RANGING FROM POIGNANT PORTRAITS TO ABSTRACT INSTALLATIONS, CAPTURE MOMENTS OF VULNERABILITY, CONNECTION, AND INTROSPECTION. THEY REVEAL THE LAYERS OF IDENTITY THAT ARE OFTEN HIDDEN BENEATH THE SURFACE, WAITING FOR THE RIGHT GAZE TO UNCOVER THEM.

THROUGH A SYMPHONY OF COLORS, TEXTURES, AND FORMS, "GLIMPSES OF THE SELF" CHALLENGES US TO REFLECT ON OUR OWN VISIBILITY IN THE WORLD. IT ASKS US TO CONSIDER HOW WE SEE OTHERS AND HOW WE WISH TO BE SEEN IN RETURN. THIS EXHIBIT IS NOT JUST A COLLECTION OF ART; IT IS A JOURNEY INTO THE HEART OF HUMAN CONNECTION AND THE ESSENCE OF WHAT IT MEANS TO BE TRULY SEEN.

**CURATED BY ERIN CHRISTOVALE & ZERINA AKERS**

# ADEE ROBERSON



Adee Roberson is an interdisciplinary artist whose work meditates on symbolism and texture. By synthesizing performance and installation, she melds vibration and technicolor visions through paintings, video, and melodic compositions. These works offer a refracted timeline of Black diasporic movement, weaving sonic and familial archives with landscape, rhythm, and spirit. Color, shape, and rhythm become constellations, creating a call and response with ancestral memory. This visual language processes the viscosity of grief, celebration, trauma, and healing.

# A D E E R O B E R S O N



## GONE TO NEGRIL

Screen Print, Arcylic on Paper

20" x 16"

**\$3,300**



## YOU ARE MY FRIEND

Screen Print and Pastel on Wood Panel

40" x 60"

**\$7,000**



## HIGH LOW

Screen Print, Arcylic on Paper

30" x 21"

**\$3,300**



## TOTALLY TOGETHER

Screen Print and Pastel on Paper

20" x 30"

**\$3,500**



# A D E E R O B E R S O N



## PEACE BEGINS (NORA DEAN)

Screen Print, Acrylic on Paper

20" x 30"

**\$6,300**



## PEACE BEGINS (NORA DEAN)

Screen Print, Acrylic on Paper Edition 1 of 3

30" x 21"

**\$6,300**



## IM SO SORRY

Screen Print, Acrylic on Paper

20" x 16"

**\$3,300**



## THE GARDEN

Screen Print on Paper Edition 2 of 3

20" x 30"

**\$4,000**

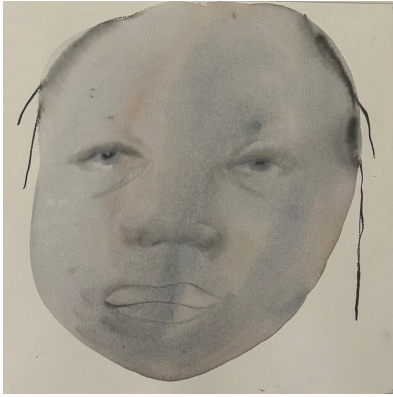


# FEBRUARY JAMES

February James uses muted watercolors and ink, as well as bright pastels and oil paints, to create ethereal, expressionistic portraits reflecting on Black identity. Her works feature dreamlike subjects with smudged and distorted features. James, who previously worked as a makeup artist, earned her BFA from the ArtCenter College of Design in Pasadena. She has exhibited widely in Los Angeles, where she lives and works, and has been included in shows in New York, Tokyo, and Turin. Though often inspired by her experiences as a Black woman in America, James's work evokes emotional states that resonate broadly with viewers.



## FEBRUARY JAMES



### MEET ME AT MY SOUL'S PLACE

Watercolor and Ink on Paper

12" x 12"

**\$3,500**

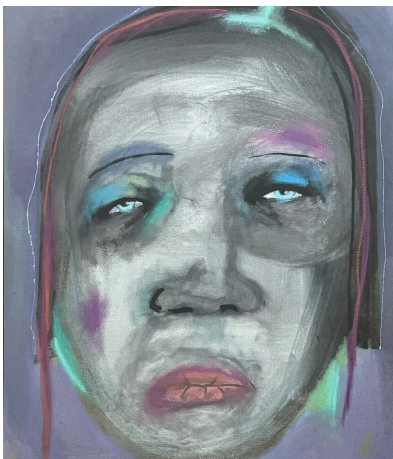


### I NEVER WANTED YOUR APPROVAL, I NEVER ASKED FOR YOUR PERMISSION

Watercolor and Ink on Paper

19" x 14"

**\$4,500**



### THINKING ABOUT FEELING

Acrylic, Ink, Watercolor, Pastel  
and Marker on Canvas

24" x 18"

**\$10,000**



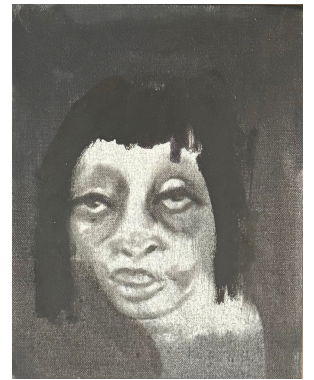
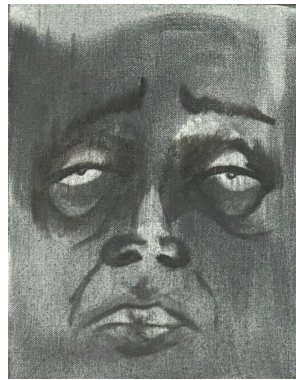
### IS THIS REAL

Watercolor and Ink on Paper

12" x 11"

**\$3,500**

FEBRUARY JAMES



AND THEN THE SPIRITS CAME TO ME WITH  
THE BURDEN OF TRUTH

Oil, Acrylic, Ink and Charcoal on Canvas

9" x 7"

**\$20,000**

SOLD TOGETHER





# KHARI JOHNSON-RICKS

Multimedia artist Khari Johnson-Ricks works across various media, including painting, performance, murals, zines, and nightlife spaces. He creates intricate, exuberant scenes from paper constructions painted in shellac ink and watercolor, exploring the illusory potential of paper. His works use the medium's graphic flatness to create two forms of depth. Johnson-Ricks explores themes of family, community, friendship, and life, drawing inspiration from vernacular movement traditions and martial arts. His compositions showcase the imagination's drive to reinvent and transcend.





## NASIR GARDEN

Alcohol ink and watercolor on paper

18" x 24"

**\$3,000**



## SCYTHE

Alcohol ink on paper

18.5" x 16"

**\$3,000**



## SAMARA

Alcohol ink, glitter, mylar, and watercolor on paper

18" x 16"

**\$3,000**





# MARIA MAEA

Maria Maea's relationship with her materials is highly intimate. Her sculptures, often life-sized, are assemblages of organic and inorganic materials drawn from various spaces—including her home garden, urban lots, and the Los Angeles River—each carrying its own history. By working with palm fronds, flowers, seeds, and concrete, Maea creates sites of invocation that are both highly personal and universal, allowing viewers to see themselves and their stories in these common materials.

M A R I A M A E A



## WHIRLPOOL

Woven Palm, Paint

70" x 75"

**\$44,000**



